

DREMEL DIGILAB

Build Platform Clip Replacement

⚠️ WARNING Read the Dremel 3D45 manual and these instructions. Failure to comply with the warnings and instructions may result in fire, equipment damage, property damage, or personal injury.

Always unplug Dremel 3D45 from its power before performing any service procedures. Failure to do so may result in personal injury and equipment damage.

Use only Dremel approved materials and components. Use of object materials, or 3D objects other than Dremel approved object materials and genuine Dremel components may void warranty.

Repairs on the Dremel 3D45 may require the use of special tools (pulling devices and bearing press). Authorized repair centers have trained repair technicians and equipment necessary to perform these repairs.

For the location of the repair center near you, look on our web site at www.Dremel3D.com and follow the link for 'Support'.

⚠️ WARNING Do not touch the extruder tip or heated build platform during Dremel 3D45 operation or until it has cooled down to at least 60oC (140oF). Contact with the extruder tip or build platform during or after operation before tip and build platform has cooled may result in personal injury.

⚠️ WARNING Do not drop the build platform. Tempered glass plate may break and result in personal injury.

⚠️ WARNING Do not twist or bend the build platform while removing objects. Tempered glass plate may separate from plastic holder and result in personal injury.

SERVICE INSTRUCTIONS

[Please click here for Video Tutorial](#)

This document will outline the steps necessary to replace a damaged build platform clip.

Tools Required:

- Socket wrench
- 7/32 deep socket
- 2mm Hex bit or Hex wrench (Allen key)
- T10 Torx (star) or screwdriver bit

Step 1: Bring Printer to Safe State

Allow the build plate and nozzle to cool down before handling. Turn off and unplug printer then wait for 20 min to allow the nozzle and build platform to cool down to a safe temperature (below 60°C).

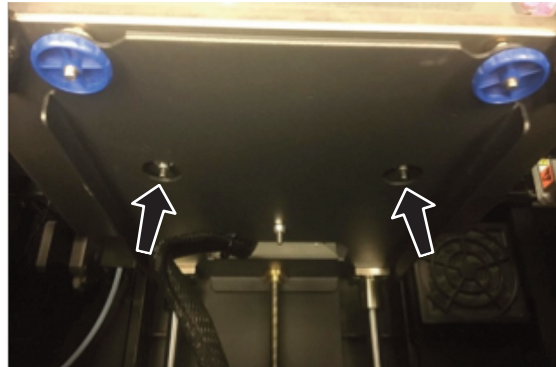
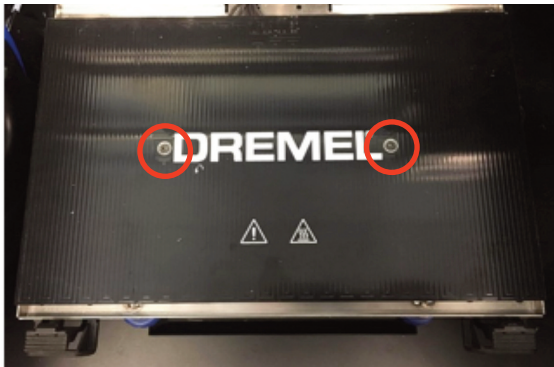
Step 2: Raise build platform

- Remove the glass build plate from the printer.
- Gently lift the build platform manually, as high as it will go. Apply the force on the metal bracket on the back of the platform (highlighted in red).



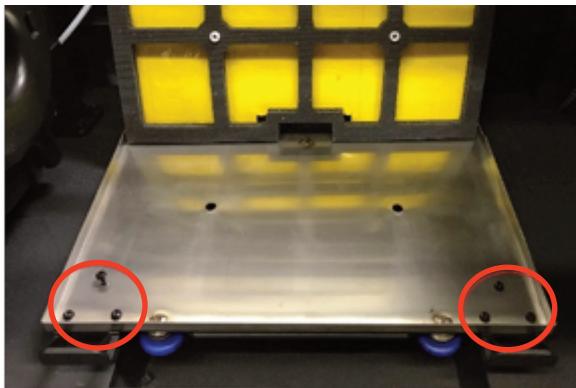
Step 3: Remove top component of the platform

- a. Remove the two screws (encircled in red) using the 2mm Allen Key and socket wrench. Place the socket wrench on the nut shown in the right picture, then use the 2mm Allen Key to loosen the screws while holding the nut with the socket wrench. There is a small washer by the nut on the bottom side, be sure not to lose it when removing the screw.



Step 4: Remove damaged build plate clips

- a. Lower the bed and tilt the bed components up to reveal the clip screws. Ensure the white spacers don't fall from foam pad.
- b. Remove the screws (encircled in red below) using the T10 Torx screwdriver.

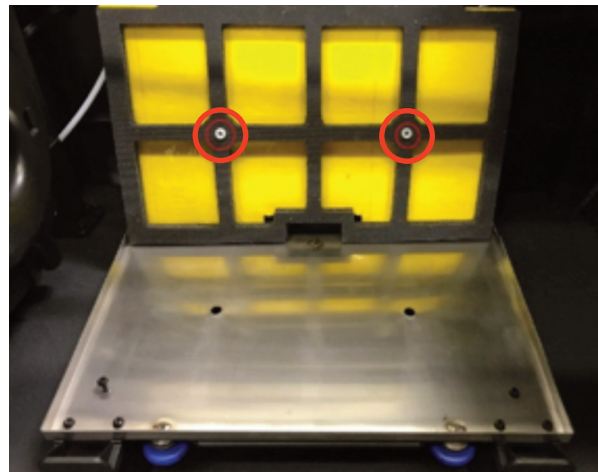


Step 5: Install new build plate clips

- a. Install new build plate. Refer to Step 4.

Step 6: Install top components of build platform

- a. Lay components back down. Ensure that the spacers are still inserted into the foam pad (encircled in red below).



- b. Raise the platform up and reinstall the 2mm Allen screws, with the small washers and nylock nuts. Refer to step 3.

Step 7: Insert glass build plate

- a. Insert the build plate and ensure it is secure.

Congratulations!
You are now ready to build. **Build On.**