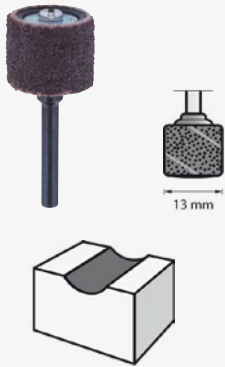
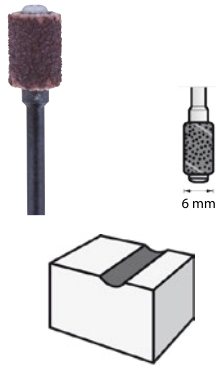


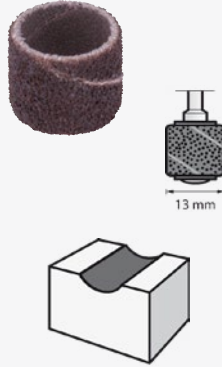
Sanding Band and Mandrel 13mm grit 60 (407)



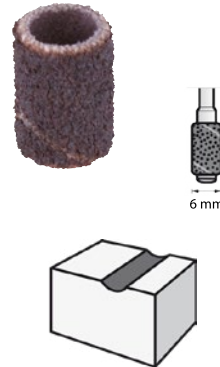
Sanding Band and Mandrel 6,4 mm 60 grit (430)



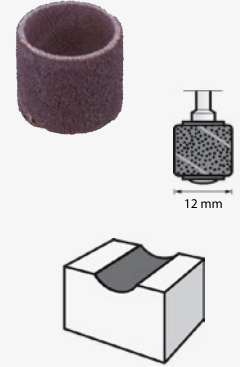
Sanding Band 13 mm 60 grit (408)



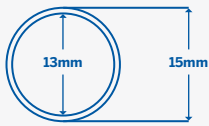
Sanding Band 6,4 mm 60 grit (431)



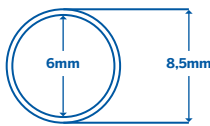
Sanding Band 13 mm 120 grit (432)



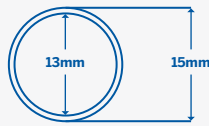
Working inner & outer diameter [mm]



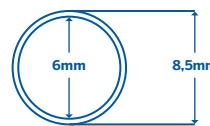
Working inner & outer diameter [mm]



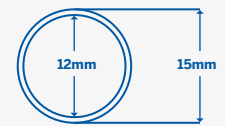
Working inner & outer diameter [mm]



Working inner & outer diameter [mm]



Working inner & outer diameter [mm]



Working height [mm]

13

Working height [mm]

12

Working height [mm]

13

Working height [mm]

12

Working height [mm]

13

Accessory length with Mandrel [mm]

36

Accessory length with Mandrel [mm]

35

Accessory length with Mandrel [mm]

35

Accessory length with Mandrel [mm]

35

Accessory length with Mandrel [mm]

35

Grit

60

Grit

60

Grit

60

Grit

60

Grit

120

Maximum RPM [1/min]

35,000

Maximum RPM [1/min]

35,000

Maximum RPM [1/min]

35,000

Maximum RPM [1/min]

35,000

Maximum RPM [1/min]

35,000

EAN-code

8710364007226

EAN-code

8710364045167

EAN-code

8710364007233

EAN-code

8710364007257

EAN-code

8710364007264

Order number

2615040732

Order number

26150430JA

Order number

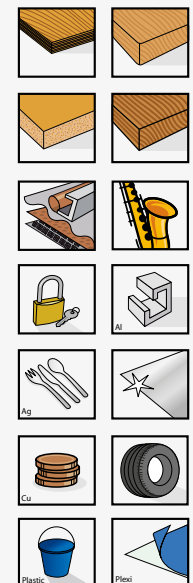
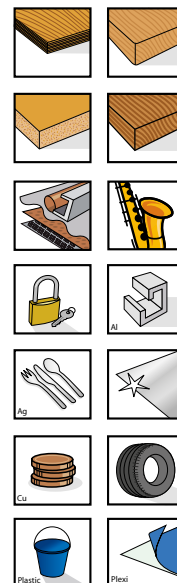
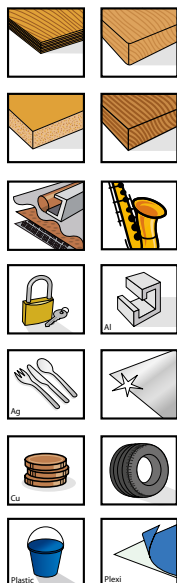
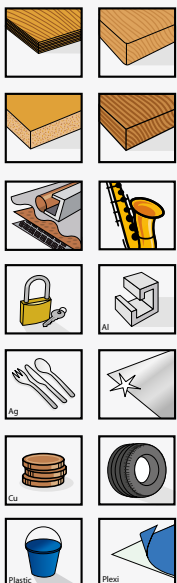
2615040832

Order number

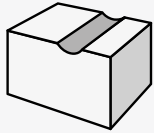
2615043132

Order number

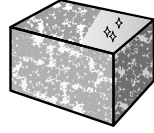
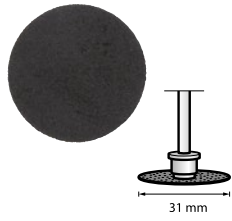
2615043232



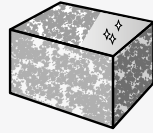
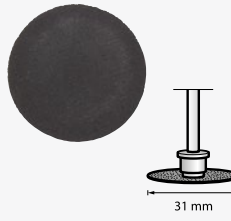
Sanding Band 6,4 mm 120 grit (438)



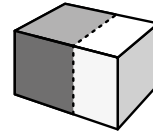
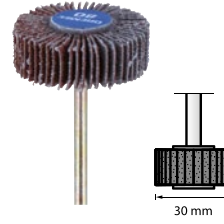
DREMEL® EZ SpeedClic: Sanding Discs (SC411)



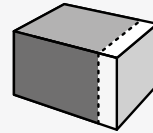
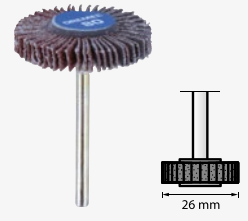
DREMEL® EZ SpeedClic: Sanding Discs (SC413)



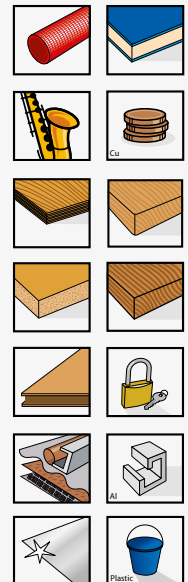
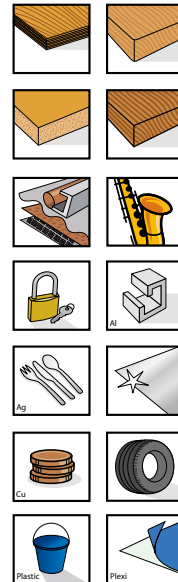
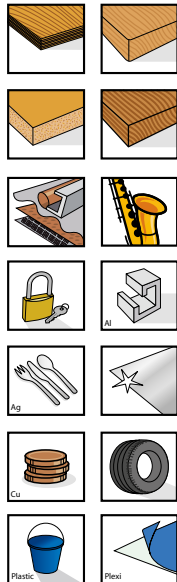
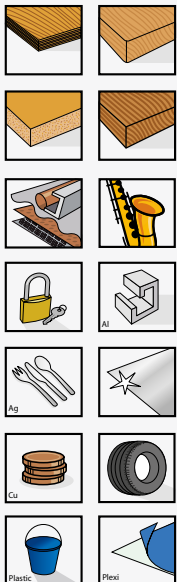
Flap wheel 4,8 mm (504)



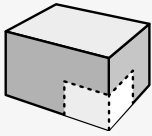
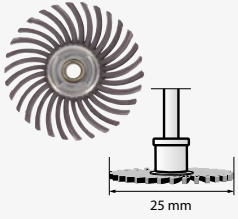
Flap wheel 9,5 mm (502)



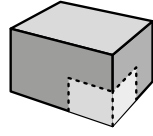
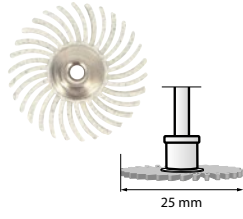
Working inner & outer diameter [mm]	Working inner & outer diameter [mm]	Working inner & outer diameter [mm]	Working inner & outer diameter [mm]	Working inner & outer diameter [mm]
Working height [mm]	Working height [mm]	Working height [mm]	Working height [mm]	Working height [mm]
12	n/a	n/a	10	4.8
Accessory length with Mandrel [mm]	Accessory length with Mandrel [mm]	Accessory length with Mandrel [mm]	Accessory length with Mandrel [mm]	Accessory length with Mandrel [mm]
35	40	40	45	45
Grit	Grit	Grit	Grit	Grit
120	60	240	80	80
Maximum RPM [1/min]	Maximum RPM [1/min]	Maximum RPM [1/min]	Maximum RPM [1/min]	Maximum RPM [1/min]
35,000	2000	2000	35,000	35,000
EAN-code	EAN-code	EAN-code	EAN-code	EAN-code
8710364007271	8710364060917	8710364060931	8710364015252	8710364015269
Order number	Order number	Order number	Order number	Order number
2615043832	2615S411JA	2615S413JA	2615050232	2615050432



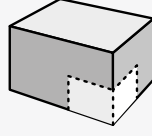
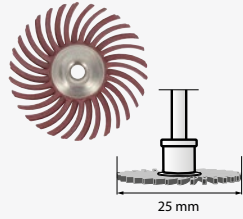
DREMEL®
EZ SpeedClic: Detail
Abrasive Brush 36 grit
(471S)



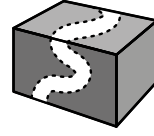
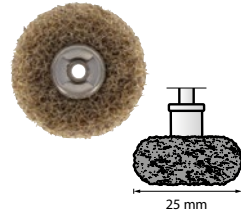
DREMEL®
EZ SpeedClic: Detail
Abrasive Brush 120 grit
(472S)



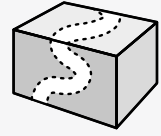
DREMEL®
EZ SpeedClic: Detail
Abrasive Brush 220 grit
(473S)



DREMEL®
EZ SpeedClic: Finishing
Abrasive Buffs 180 & 280
grit (511S)



DREMEL®
EZ SpeedClic: Finishing
Abrasive Buffs 320 grit
(512S)



Working inner & outer diameter [mm]	Working inner & outer diameter [mm]	Working inner & outer diameter [mm]	Working inner & outer diameter [mm]	Working inner & outer diameter [mm]
Working height [mm]	Working height [mm]	Working height [mm]	Working height [mm]	Working height [mm]
3	4	5	12	14
Accessory length with Mandrel [mm]	Accessory length with Mandrel [mm]	Accessory length with Mandrel [mm]	Accessory length with Mandrel [mm]	Accessory length with Mandrel [mm]
43	43	43	47	45
Grit	Grit	Grit	Grit	Grit
36	120	220	180/200	320
Maximum RPM [1/min]	Maximum RPM [1/min]	Maximum RPM [1/min]	Maximum RPM [1/min]	Maximum RPM [1/min]
15,000	15,000	15,000	20,000	20,000
EAN-code	EAN-code	EAN-code	EAN-code	EAN-code
8710364050314	8710364050321	8710364050338	8710364037100	8710364037117
Order number	Order number	Order number	Order number	Order number
2615S471JA	2615S472JA	2615S473JA	2615S511JA	2615S512JA

